

WJTA[®]

WATERJET TECHNOLOGY
ASSOCIATION



WJTA Rigid Lancing Survey

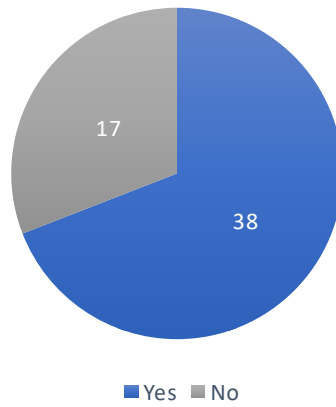
In April 2021, an electronic survey was distributed to WJTA members to gather feedback for the association's training and certification effort and to help inform the industry.

The survey was intended to shed light on the prevalence of manual and automated rigid lancing, identify trends in this application, and evaluate the training needs around rigid lancing.

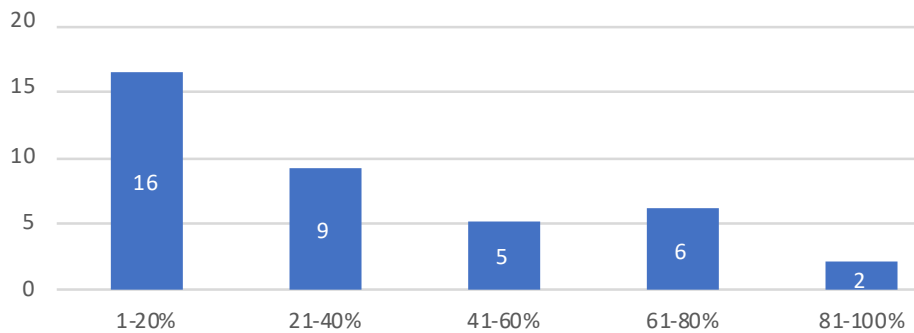
Following is a compilation of results with 55 responses. For more information on the WJTA Training and Certification program or the association's other industry initiatives, visit the website at www.WJTA.org, email wjta@wjta.org or call 314-241-1445.

WJTA Rigid Lancing Survey
April/May 2021

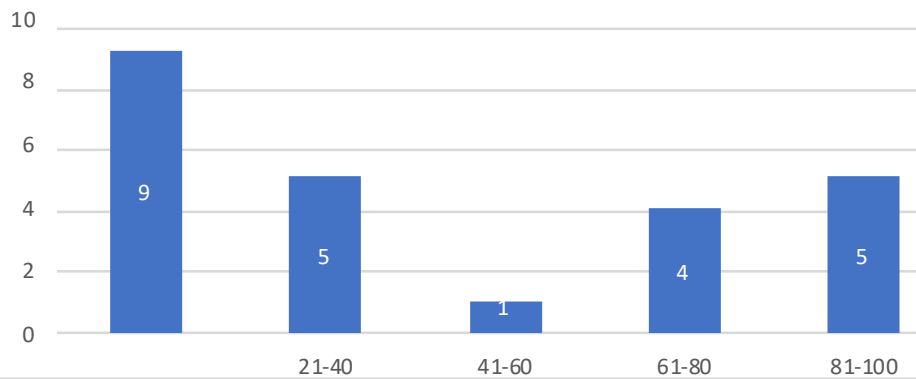
1. Does your company perform rigid lancing?



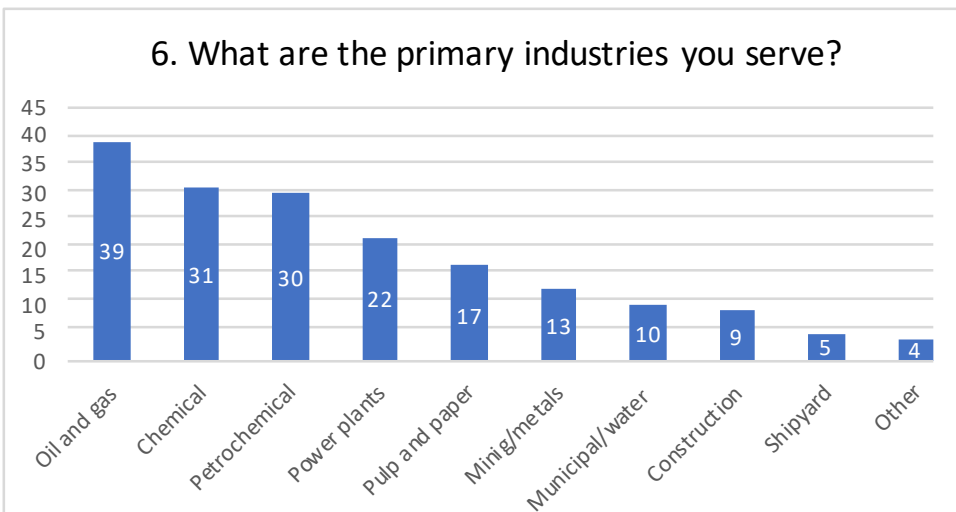
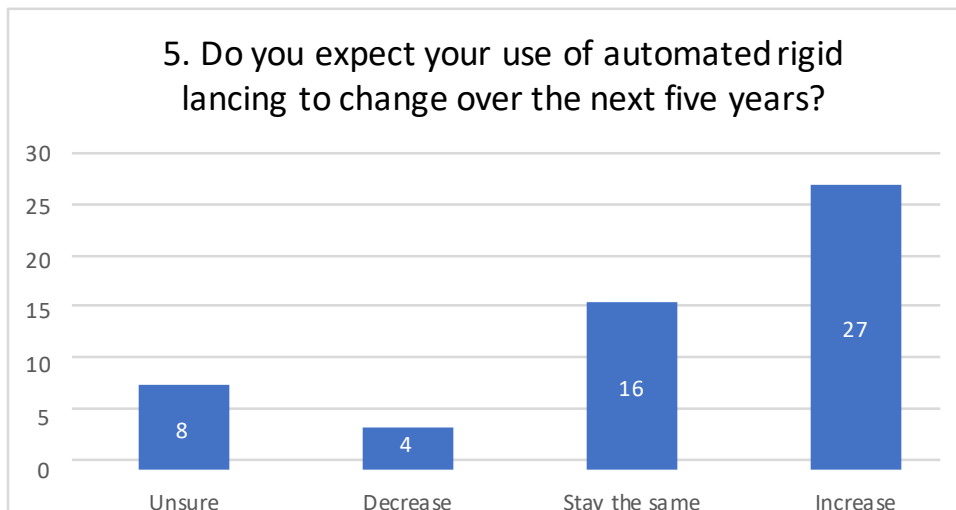
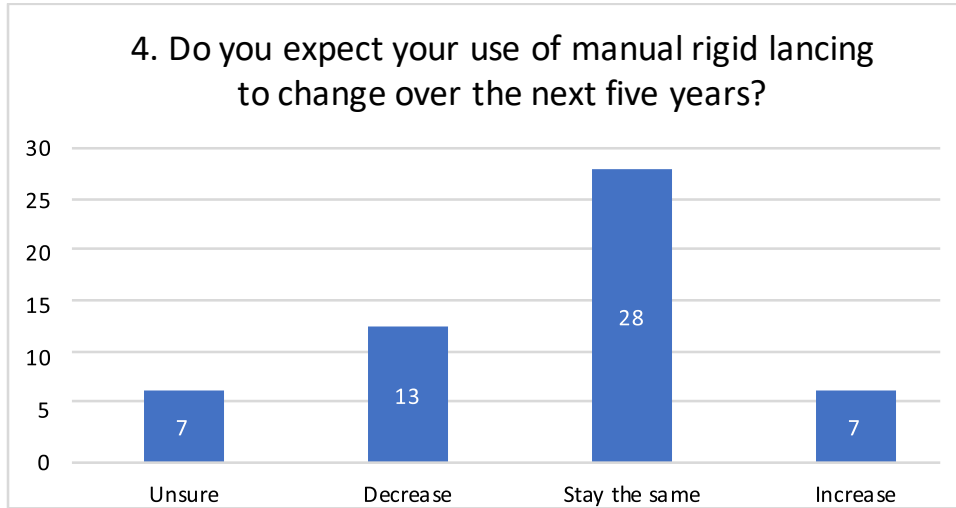
2. What percentage of your tube cleaning is performed by rigid lancing (rather than flex lancing or other cleaning methods)?



3. Of the rigid lancing that you perform, what percentage is performed manually?

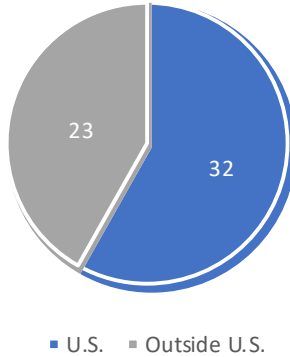


WJTA Rigid Lancing Survey
April/May 2021

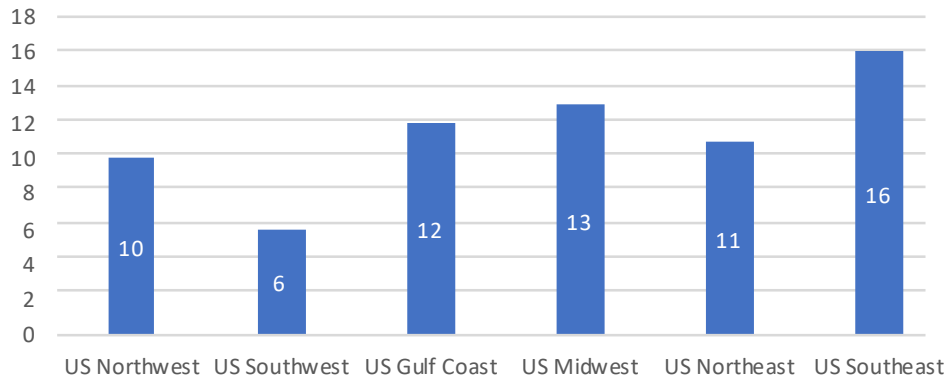


WJTA Rigid Lancing Survey
April/May 2021

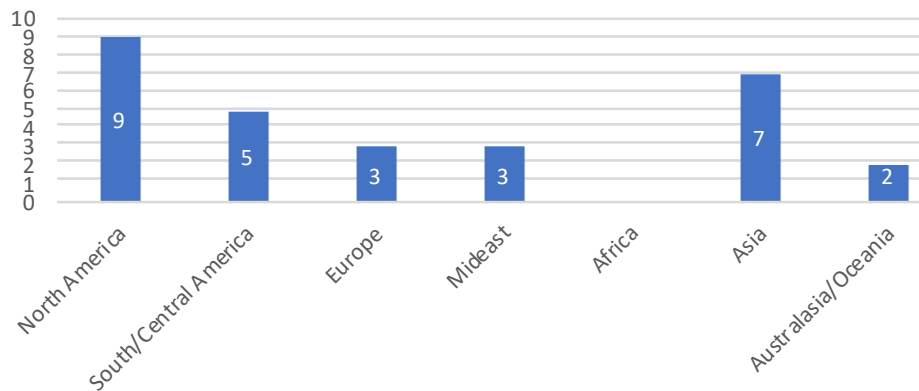
7. Do you work primarily in the U.S. or internationally?



8. If you selected U.S., what are the main geographies you serve?



9. If you selected Outside U.S., what are the main geographies you serve?



WJTA Rigid Lancing Survey

April/May 2021

Comments:

- Rigid lancing is the most dangerous job we do.
- Rigid lancing is almost a thing of the past. However I have noticed that some are using it due to its controlled rotation. There are still advantages of using rigid Lance machines. You didn't specify the difference between rigid and flex lancing when it comes to using machines such as ATL5000 or IBC. I consider those flex although you are still pushing a rigid Lance. Maybe it should be called controlled rotation or self rotating? Just food for thought.
- As a manufacture of lancing equipment we are seeing the steady transition to automation.
- We prefer not to use manual rigid lancing, but sometimes the situation calls for it.
- Automated is king.
- I love the WJTA!
- We are a Distributor of WaterJetting Equipment.
- We need special training.
- Most of the tube cleaning we do is with the bundle still upright and in place. Would be good to see a floor mount Back-out preventer for these types of jobs as there is little ability to use mechanical methods.
- Great survey and made me realize that we are ultimately heading in the right direction, slowly but surely with automation. It's the safest route.
- We work in western Canada.
- Automated flex lancing is the BEST/SAFEST way. Most of our rigid lancing is done on wash pads using remote operated equipment. We only rigid lance in situations when unable to flex lance.
- We have taken the following approach into consideration: 1.) Communicate that any Rigid Lancing would only be considered if the Tube I.D. were LESS than .450" 2.) Primary approach would be a means of automation providing real-estate is available at the work piece 3.) Manual Rigid Lancing would only be performed if VE-400 Chicken Wing AWD had means to affix to work piece for use with the selected Rigid Lance