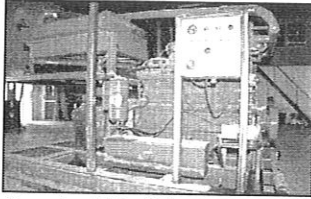


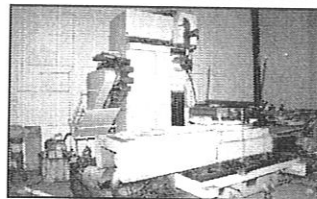


A LIQUIDATION OF FREEMYER INDUSTRIAL PRESSURE, INC. RENTAL FLEET

Well Stimulation & Industrial Cleanup
Tuesday, June 4, 2002 at 9:00 A.M. Houston, TX - Hobby Airport Hilton



Cummins 1710 w/Allison 6061 Trans



Mitsubishi 3-Axis Machining Center



(2) Gardner-Denver D2000 Triplex Pumps



(22) Water Blast Units

WATER BLAST UNITS

(2) FMC M1600 20,000 PSI Triplex Water Blast Pumps. Ea p/b CUMMINS NHC-250 Diesel Eng. Mtd on T/A Trailer

(2) FMC M16 20,000 PSI @ 20 GPM Triplex Water Blast Pumps. Ea p/b CUMMINS NHC-250 6-Cyl Diesel Eng. Ea Unitized w/Lifting Frames & Mtd on T/A Trailer

FMC M16 20,000 PSI @ 20 GPM Triplex Water Blast Pump p/b DETROIT 6-71 Diesel Eng. Unitized w/Lifting Frame. Mtd on T/A Trailer

(8) FMC M12 10,000 PSI Triplex Water Blast Pumps. Ea p/b JOHN DEERE 4-Cyl Diesel Eng & Mtd on T/A Trailer

(9) FMC M12 10,000 PSI @ 20 GPM Triplex Water Blast Pumps. Ea p/b JOHN DEERE 4050-T Diesel Eng & Mtd on T/A Trailer

PARTEK PT-33 10,000 PSI @ 12 GPM Triplex Water Blast Pump p/b DETROIT 4-53 Diesel Eng. Mtd on T/A Trailer

UNION 10,000 PSI @ 20 GPM Quintuplex Pump p/b DETROIT 4-71 Diesel Eng. Mtd on T/A Trailer

WHEATLEY 10,000 PSI @ 20 GPM Quintuplex Pump p/b CAT 3304 Diesel Eng. Unitized w/Lifting Frame

PRATISOLLI HD18 7000 PSI @ 8 GPM Triplex Water Blast Pump p/b LOMBARDINI 11-LD-626-3 3-Cyl Diesel Eng. Unitized w/Lifting Frame

PARTEK T300 5000 PSI Triplex Water Blast Pump p/b DETROIT 3-53 Diesel Eng. Mtd on T/A Trailer

WOMA 752-30 5000 PSI @ 15 GPM Triplex Water Blast Pump p/b DEUTZ F6L912 6-Cyl Diesel Eng. Mtd on T/A Trailer

AIR COMPRESSOR

1998 SULLAIR 250 CFM Portable Air Compressor p/b JOHN DEERE 4-Cyl Diesel Eng. on S/A Trailer (1570 Hours Since New)

FORKLIFT

CLARK C-500Y Forklift p/b 4-Cyl LPG Eng. 4L Forks, ROPS

PUMPS & RELATED EQUIPMENT

(2) GARDNER-DENVER D2000 2200 HP Triplex Pumps (Unused)

WESTERN RB-80 Triplex Pump w/Forged Steel Fluid Ends p/b CUMMINS 1710 Diesel Eng. FULLER 13-Spd Trans. Skidded w/Soundproof Eng Container

WESTERN RB-80 Triplex Pump, w/o Fluid End

OPI 880 Triplex Pump w/Forged Steel Fluid End

OPI 2000 HP Forged Steel Fluid End

OPI 2000 HP Water Blast Fluid End

OPI 600 3" 10,000 PSI Fluid End

GARDNER-DENVER TEE 10,000 PSI Fluid End

Very Large Assortment of Fluid End Parts
fNumerous Triplex Pumps

DETROIT 3-53 Diesel Eng Core

(1) ROCKFORD 10" & (1) TWIN DISC 11-1/2" PTOs w/Parts

Hyd Power Unit w/LISTER 3-Cyl Diesel Eng. Hyd Pump. Reservoir. Unitized Rt Angle Gear Box

(22) ft" x 50L 10,000 PSI Water Blast Hoses

(1) 50L & (1) 35L 20,000 PSI Water Blast Hoses

Asstd Water Hoses

(2) GOODWAY Machines w/Lances & Brushes

(28) CRS. JETSTREAM & BUTTERWORTH Foot Controls

(17) CRS. JETSTREAM & BUTTERWORTH O Thrust Spray Guns

(17) 20" x 2-3/8" & 4-1/2" Filters

SS Filter Housing

(4) Filter Wrenches

Ass'd Fuel Air & Hyd Filters, O-Rings & Parts

Ass'd 7000, 10,000 & 20,000 PSI Nozzles & Fittings

(6) Sheside Roller Assemblies w/Spray Carts

500-Gal Diesel Fuel Tank w/Elec Pump, Spill Recovery Skid

POWER UNIT ENGINES & TRANSMISSIONS

CUMMINS 1710 700 HP Diesel Eng w/ALLISON CLT-6061-4 Trans. Cooler w/Hyd-Powered Fan. Fuel Tank. All Unitized on Offshore Oilfield Skid (Eng Load Tested)

CAT D348 940 HP Diesel Eng (3269 Metered Hours). Radiator, Gauges (Dyno Tested)

CUMMINS 4BTA 130 HP Diesel Eng. Radiator, Gauges (Unused)

(2) DETROIT 12V-92 TT Diesel Eng

(2) DETROIT 8V-92 TA Diesel Eng

DETROIT 6V-92T Silver Diesel Eng (Factory Rebuilt)

DETROIT 6V-71 Diesel Eng

DETROIT 6V-53 Diesel Eng w/FULLER Trans. Mtd on Steel Truck Bed

DETROIT 4-71 Diesel Eng. Mtd on T/A Gooseneck Trailer

ALLISON CLT-6061 & Rebuilt ALLISON HT-750 DRD Trans

TWIN DISC 1000 HP Trans w/Converter

WELL STIMULATION COMPONENTS/TRAILERS/STAINLESS STEEL RADIATORS

1982 LUFKIN SPL T/A Lowbed Acid/Frac Trailer w/Operator's Console, Drive Shafts, Fuel Tanks

HALLIBURTON Lowbed Frac Trailer

Twin 750-Gal Acid Tanks (DOT Certifiable)

1925 Cu Ft Nitrogen Tank (DOT Certifiable)

(3) Offshore Water Blast Skids (Unused)

(2) Pump Skids

8'W x 40L T/A Float

(2) INHEXO 1000 HP Stainless Steel Radiators (Unused)

MACHINE SHOP EQUIPMENT

MITSUBISHI 3-Axis Machining Center (\$10,000 Worth of New Tooling)

LINCOLN Ranger 8 250 Amp Welder p/b KOHLER 2-Cyl Gas Eng. Cutting Torch Rack. Mtd on S/A Trailer

GATES PC-707 Hyd Hose Crimper w/Dies

KBC Band Saw

MILLER 250 Amp Wire Feed Welder

(3) LANDA High Pressure Hot Water Washers p/b BRIGGS & STRATTON Gas Eng

LANDA High Pressure Hot Water Washer p/b KUBOTA Diesel Eng

(2) LANDA Portable Steam Cleaner/Pressure Washers

20,000 PSI Hydro Mower

Soda Pot w/Cart

INGERSOLL RAND 234OLS T-30 Vertical Shop Air Compressor p/b 5 HP Elec Motor

Oxygen/Acetylene Cutting Torch w/Regulator, Hoses & Cart

ENCO 126-2172 5/8" Drill Press

WHITCO 160H Portable Elec/Kero Shop Heater w/Oil Burner, Thermostat

Portable Elec/Kero Shop Heater

(3) Steel Shop Tables w/Vises

(4) Hand Trucks, (2) Carts, (2) Floor Jacks & (7) Jack Stands

Barrel Racks, Barrel Pumps, Binders, Straps, Misc Tools, (3) Ladders

Misc Grinders, Cutoff Saws, Hand Tools

Large Assortment of Unused Steel

(2) 12'W x 24L Storage Buildings

OFFICE FURNITURE

Wood Dbl Pedestal Desk - Computer Table w/Cabinet - COMPAQ Deskpro PC w/Windows 98, 64.0 MB RAM, Pentium Processor, 77% Free System Resources, D Drive, 3-1/2" Floppy, NEW-POINT Switcher 2000 Plus, H-P Deskjet 895 LSE Printer, KDS Color Monitor, Mouse, Keyboard - PANAFAX UF-770 Fax Machine - SHARP SF-8300 Photo Copier w/Cart - (2) 4-Drawer File Cabinets, (2) Bookshelves - (2) 2-Drawer File Cabinets - (10) Folding Steel Chairs - Steel Dbl Pedestal Desk - (1) Executive & (2) Swivel Steno Chairs - (2) Calculators

FOR AUCTION INFORMATION,
CONTACT LARRY RODGERS or TIM HEALY
AT
210-375-8470

