

Summary of Papers at the SSPC 2003 Conference Dealing With Surface Preparation Methods, Waterjetting, Wet Abrasive Blasting, And Environmental Issues, from page 4

Ultra High Pressure Waterblasting Equipment

3. A Comparison of Methods For Surface Preparation On Concrete Surfaces

James P. Crocker
President
PCS, Inc.
Heavy Duty Hydro Blasting
P.O. Box 959
Hobe Sound, FL 33475

In the paper he compares UHP waterblasting, sandblasting, and shot blasting costs of equipment, cost to remove coatings, and advantages and disadvantages.

UHP Waterblasting Equipment. Depending on the manufacturer, a typical waterblasting pump

rated for 40,000 psi and approximately 6 gallons/minute valued at approximately \$122,000. This price includes 200 feet of high pressure hoses, 2 guns & 2 bi-modes and a vacuum recovery mower. In addition to this investment, you will need a vacuum for the recovery of water and debris. An adequate unit can be purchased for approximately \$20,000 to \$40,000. This unit would be rated for 1,000 cfm and about 800 gallons of debris capacity. Total cost would be close to \$152,000.

UHP Waterblasting. If you are required to remove a urethane or epoxy coating from a concrete surface and there is a decent amount of square footage

available, you can expect to pay between \$1.00 to \$2.00 per square foot depending on the elasticity, bonding, stickiness accessibility and thickness of the coating. Thin film can be around \$0.50 per square foot.

Bridges

4. Effluent From Bridge Pressure Washing Operations

Bob Meade
Kentucky Transportation Cabinet
Ted Hopwood
University of Kentucky

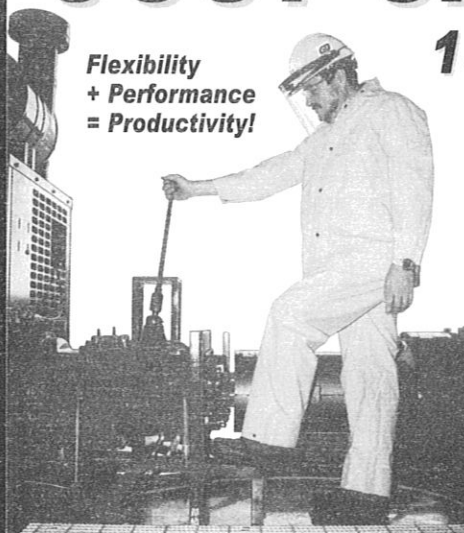
Kentucky uses pressure washing (3,000-10,000 psi) with overcoating on many of their bridges.

(continued on page 8)

JUST SHIFT GEARS!

15K to 20K in Seconds!

**Flexibility
+ Performance
= Productivity!**



Why buy **multiple fluid ends** for the same pump when all you have to do is **shift gears**? Our rugged multi-speed Liqua-Blaster water jetting units offer significant up-front cost and labor savings by doing the whole job to begin with. Our transmission units have up to 16 speeds to match your pressure, flow and horsepower requirements. Let us match the waterblaster to your cleaning needs.

Call us for price and delivery!

1-800-231-3628

12300 North Houston-Rosslyn Road
Houston, Texas 77086
281-448-5800 • FAX 281-448-7500
www.waterjetting.com • mktg.wjs@gardnerdenver.com



Your SINGLE SOURCE Water Jetting Solution.



Summary of Papers at the SSPC 2003 Conference Dealing With Surface Preparation Methods, Waterjetting, Wet Abrasive Blasting, And Environmental Issues, from page 7

They looked at unfiltered effluent, filtered effluent, sand filters, some combination with chemical filters designed to remove dissolved metals. The pH of the potable water ranged from 6.84 to 8.17; of unfiltered effluent water from 6.10 to 8.54; of conventionally filtered wastewater from 5.81 to 8.45. Chemical filtering provided interesting data. One chemical filter did not change the pH; the second chemical filter increased the pH from about 7 to between 9.07 and 9.20. Filter fabric by itself is ineffective in removal total and dissolved lead, but good to remove large particles. Low tech, low cost sand filter is effective to remove lead. Proprietary phosphate chemical reduced lead to below drinking water standards.

5. Demolition Of The Elevated Central Artery

Ken S. Chin, P.E.
Bechtel/
Parsons
Brinckerhoff
185 Kneeland
Street
Boston, MA
02111

To reduce exposure levels to the workers,

Bechtel defined acceptable methods to remove lead based paint included power tool cleaning, hand tool cleaning, UHP Water Jetting (looks like WJ-1), encapsulation. Data is given for some of the exposure levels.

Analytical Methods

6. Levels Of Salt Contamination On Steel Beneath Coatings

Kenneth B. Tator, P.E.
KTA-Tator, Inc.
Pittsburgh, Pennsylvania 15275
www.kta.com

Discusses osmotic blistering, sources of acid rain, relative

corrosivity, hygroscopic tendency, uses the three half reactions in LaQue early chapter in Vol. 1 (acidic, weak acidic, near neutral conditions), need for oxygen, migration of chloride ion to anode.

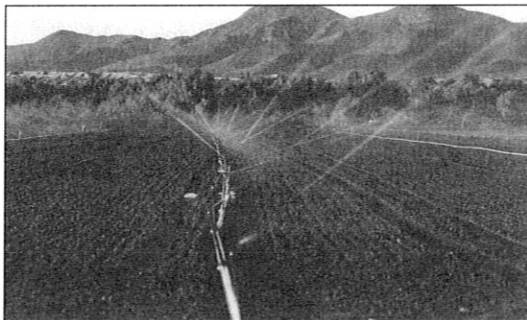
Concrete

7. Surface Preparation Of Concrete For Coatings, Toppings, And Overlays

Fred Goodwin
Principal Scientist
Degussa Construction
Systems ChemRex/Master Builders
Cleveland, Ohio

(continued on page 9)

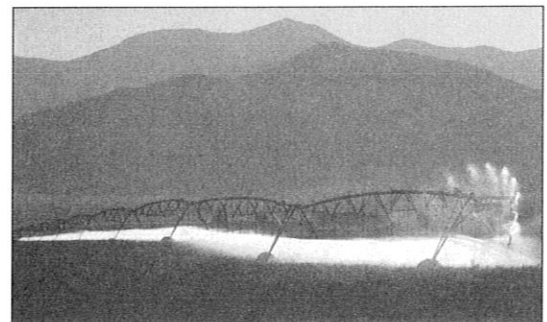
Irrigation



Handline sprinkler irrigation germinating crops in Yuma, Arizona. Photographs by Jeff Vanuga, USDA Natural Resources Conservation Service



Center pivot irrigation. Georgia. Photo by Jeff Vanuga, USDA Natural Resources Conservation Service



Efficient irrigation systems help save water and decrease leaching of salts. Photo by Gene Alexander, USDA Natural Resources Conservation Service

WaterJet Technology Association's Order Form for Publications/Products

Name _____ Member # _____

Company _____

Address _____

City _____ State _____

Country _____ Postal Code _____

Phone # [] () _____

Fax # [] () _____

Billing Address (if different from above):

Address _____

City _____ State _____

Country _____ Postal Code _____

Payment Method

- ☐ Check or Money Order payable to **WJTA**
(U.S. DOLLARS ONLY)
- ☐ PO # _____ (Enclose PO)
- ☐ Please charge my ☐ MC ☐ VISA
☐ American Express

Credit

Card # _____

Exp. Date _____ / _____

Print name as it appears on card

Cardholder's signature

THREE EASY WAYS TO ORDER

By Phone: Just call
(314)241-1445 and have
your credit card
information ready. (MC/
VISA/Am. Exp. ONLY).

By Fax: Fill out the order
form with your credit card
information and call our
24-hour fax number at:
(314)241-1449.

By Mail: Fill out the order
form and mail with
applicable payment to:
**WJTA, 917 Locust
Street, Ste. 1100, St.
Louis, MO 63101-1419.**

	WJTA Member Price	Non Member Price	Shipping & Handling	
____ Proceedings CD-ROM of The 2003 WJTA American Waterjet Conference (2003)	@ \$ 99.00	\$ 115.00	\$ 6.00	= \$ _____
____ Proceedings Book & CD-ROM of The 2001 WJTA American Waterjet Conference (2001)	@ \$ 65.00	\$ 80.00	\$ 8.00	= \$ _____
____ Proceedings Book & CD-ROM of The 10th American Waterjet Conference (1999)	@ \$ 35.00	\$ 50.00	\$ 8.00	= \$ _____
____ Proceedings Of The 9th American Waterjet Conference (1997)	@ \$ 25.00	\$ 35.00	\$ 8.00	= \$ _____
____ An Overview of Waterjet Fundamentals And Applications, Fifth Edition (2001)	@ \$ 55.00	\$ 70.00	\$ 8.00	= \$ _____

A limited supply of the 6th, 7th and 8th Conference Proceedings are available for the cost of shipping (varies depending on destination). Contact WJTA for details.

Recommended Practices, English Edition

1 - 10 copies _____ # of copies	x \$ 5.00 ea.	\$ 10.00 ea.	= \$ _____
11 - 99 copies _____ # of copies	x \$ 4.00 ea.	\$ 8.00 ea.	= \$ _____
100 - or more copies _____ # of copies	x \$ 3.00 ea.	\$ 6.00 ea.	= \$ _____

Recommended Practices, Spanish Edition

1 - 10 copies _____ # of copies	x \$ 7.00 ea.	\$ 12.00 ea.	= \$ _____
11 - 99 copies _____ # of copies	x \$ 6.00 ea.	\$ 10.00 ea.	= \$ _____
100 - or more copies _____ # of copies	x \$ 5.00 ea.	\$ 8.00 ea.	= \$ _____

Shipping and Handling

1 - 10 copies \$0.50 per book, 11 - 99 copies \$0.40 per book
100 - or more copies \$0.25 per book

_____ # of copies x \$ _____ = \$ _____

WJTA Recommended Practices Safety Video, Available In VHS Video or CD-ROM.

Specify: ☐ VHS Video or ☐ CDROM

1 - 4 copies _____ # of copies	x \$ 49.95 ea.	\$ 99.95 ea.	\$ 6.00* =	\$ _____
5 - 10 copies _____ # of copies	x \$ 39.95 ea.	\$ 89.95 ea.		= \$ _____
11 - or more copies _____ # of copies	x \$ 29.95 ea.	\$ 79.95 ea.		= \$ _____

Shipping and Handling = \$ _____

*Contact the WJTA office for the shipping and handling charge of more than one Safety Video.

WJTA Decals _____ # of decals - 3" x 5" x \$ 1.00 ea. N/A = \$ _____

Baseball Cap _____ # of caps x \$ 7.95 each \$ 7.95 each \$ 6.00 ea. = \$ _____

WJTA Navy Blue Polo Shirt _____ # of shirts x \$ 30.00 each \$ 35.00 each \$ 7.00 ea. = \$ _____

Size _____ (S, M, L, XL, 2X)

Safety Cards 1-10 safety cards _____ # of cards	x	.30 each	.50 each	= \$ _____
11-99 safety cards _____ # of cards	x	.25 each	.45 each	= \$ _____
100-249 safety cards _____ # of cards	x	.20 each	.40 each	= \$ _____
250+ safety cards _____ # of cards	x	.17 each	.35 each	= \$ _____

Shipping and Handling

Safety Cards: 1-50 cards FREE** = \$ _____

**For the purchase of more than 50 safety cards, call the WJTA office for the shipping and handling charge.

For shipping and handling charges outside the USA, contact the WJTA Office.

TOTAL ENCLOSED \$ _____

