



Oat Jet



This photograph shows oats being loaded at the Guiney Organic Farm in Mower County, Minnesota. The oats are being loaded from a farm wagon into a trailer for transport to market. The oats are forced through the loading tube by an auger powered by a John Deere 530 Tractor.

The Guiney Family has operated this farm in Mower County, Minnesota since 1856.

**2007 American WJTA Conference and Expo
information inside this issue**

On the inside

*Industrial Vacuum Contractors,
Manufacturers Form Committee
To Develop Recommended
Safety Practices pg. 2*

*Abrasive Waterjet For Cathode
Ray Tube Disassembly pg. 4*

*Waterjetting Effects On Concrete
Moisture Level pg. 6*

*Abrasive Waterjets For Surface
Finishing Of Marble pg. 9*

Industrial Vacuum Contractors, Manufacturers Form Committee To Develop Recommended Safety Practices

The WaterJet Technology Association (WJTA) organized a meeting of industrial vacuum contractors and representatives of equipment manufacturers in Chicago, Illinois, on August 22, 2006, to discuss the possibility of creating a document of recommended safety practices for industrial vacuum training and operations and to address other issues involving industrial vacuum contractors.

This meeting was very successful. The participants offered suggestions and exchanged ideas on how to develop a recommended safety practices document and the key issues that should be addressed in the document. A committee of contractors and manufacturer's representatives was formed to begin work on the project. Subsequent to the August 22nd meeting, two conference call meetings have been held, and a draft table of contents has been created (see list reprinted at right). Committee members are currently developing text to cover issues in the table of contents.

The committee invites your comments and suggestions regarding topics and issues that could be included in the recommended safety practices document. Please address your comments and suggestions to:

Recommended Safety Practices
for Vacuum Operations
c/o WJTA
906 Olive Street, Suite 1200
St. Louis, MO 63101-1434
Phone: 314-241-1445
Fax: 314-241-1449
Email: wjta@wjta.org.

Recommended Practices for Industrial Vacuum Services

-DRAFT Table of Contents -

1.0 Introduction

1.1 Purpose

2.0 Types of Trucks

2.1 Wet/ Dry Vacuum Trucks

2.2 Dry Vacuum Trucks

2.3 Wet Vacuum Trucks (each of these to include recommended practices, method [pump, suction])

2.4 Liquid, Air Machines and Dry Vacuum Combo

3.0 General Safety

3.1 Do's and Don't's

3.2 Seeking Medical Attention

3.3 Variable Hazards

3.4 Constant Hazards

4.0 PPE (to include hard hat, safety boots, gloves, hearing protection, safety glasses and fall protection (top of truck))

5.0 Training Requirements

5.1 Hazcom/ WHMIS

6.0 Operational Requirements

6.1 Operational Checklist

6.2 Tie-Down Requirements

6.3 Confined Space Safety (Vacuum Trucks)

6.4 Vacuum Relief Valves

6.5 Cross Contamination

6.6 Last Contained Commodity

6.7 Wheel Chocks

6.8 Safety Tee/ Lanyard/ Vacuum Breaker

6.9 Grounding/ Bonding

6.10 Signage

6.11 Equipment Set-Up (Movement and Transportation)

7.0 Loading/ Offloading

7.1 Hazards

7.2 Methods

7.3 Pinch Points

8.0 Material Handling

8.1 Awareness

8.2 Material Containment

8.3 Carbon Steel vs. Stainless Steel

8.4 Caustics/Acids

9.0 Hoses and Fittings

9.1 Types

9.2 Hose Size/ Capacity

9.3 Connections/ Clearing/ Handling

9.4 Minimum Hose Requirements

9.5 Compatibility

9.6 Sharp Edges

9.7 Maintenance and Inspections

10.0 Vacuum Team Responsibilities

10.1 Truck Operator

10.2 Hose Operator

10.3 Laborer

11.0 Emergency Shutdown

11.1 Procedures (Manufacturer Specifications)

11.2 Equipment and Worksite

11.3 Communication

12.0 Accidents

12.1 Injury Potential

12.2 Damage

12.3 Explosion

13.0 Certifications

13.1 Schedule

13.2 Pressure Vessel

13.3 DOT Regulations

13.4 VIPKT

13.5 Placards

13.6 Weight (Local Requirements and Awareness)

14.0 Glossary (to include symbols, decals, trucks vs. products chart, etc., and definitions [for example, define combo machine, high pressure water, vacuum breaker, safety tee and sewer flusher, etc.]

15.0 References

Jetstream ... for a true conversion



Contractors who use Jetstream waterblasters tell us they're converts for life. Because we've given them reason to believe.

- The industry's only true fully convertible unit (10K, 20K, 40K).
- Pressure-specific components so an operator can't accidentally connect low-pressure fittings to higher pressure components.
 - Proven durability.
 - Easy maintenance, with cartridge-based design.
 - Experts who can show you the path to productivity and profitability.

We want to make a believer out of you.

For a demonstration, call 1-800-231-8192 or go to www.waterblast.com



Jetstream
Subsidiary of Federal Signal Corporation



Abrasive Waterjet For Cathode Ray Tube Disassembly

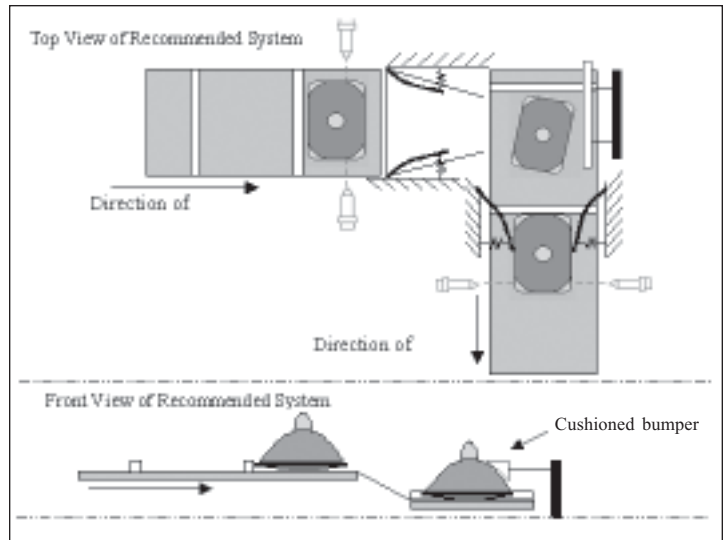
Glass cutting with abrasive waterjets is a very common application. However, cutting cathode ray tubes (CRT) with abrasive waterjets requires a special investigation. Geskin et al. * presented such an investigation in their 2002 paper. Here are the highlights.

A CRT consists of a faceplate, made of unleaded or low-leaded glass, and a funnel, made of high-leaded glass. For retired CRTs, there is a need to separate these two parts so that the unleaded or low-lead glass can be used in some other applications (e.g. in architecture and construction). Two currently commercial technologies for CRT disassembly are water-cooled diamond saw and a "hot-wire", which employs thermal shock to break the glass tube. These two commercial technologies have their limitations in productivity and separation reliability as well as automation.

In evaluation of abrasive waterjets for CRT disassembly, the basic requirement is complete separation of a CRT within a time frame of significantly less than 2 minutes. The authors started with an abrasive waterjet cutting experiment in the lab. Using 45 kpsi water pressure, a 0.010" orifice, and a 0.060" focusing tube, a separation speed of 60 ipm was achieved. Then further tests were done with these four approaches: (a) multiple nozzles; (b) using glass abrasive; (c) use water-only jets; (d) use low-pressure suspension jets. Multiple nozzles can definitely cut down the cycle time. Using glass abrasive can achieve a reasonable cutting speed at 30 ipm. But nozzle clogging did occur, probably due to inconsistent glass particle sizes and nozzle design. Further processing refining is needed if glass abrasive is to be used. Water-only jets tend to break the glass and did not show promising results. Tests with suspension jets were conducted in a different location and the results did

show effectiveness of suspension jets in this job.

Based on these tests, a waterjet-based CRT disassembly prototype system at a laboratory scale was built and tested. This system used two sets of dual nozzle setup, mounted on two cutting stations oriented 90 degrees to each other and linked with conveyor belts. The first set of dual jets cut off two sides, simultaneously, of the rectangular faceplate. The CRT was then transferred to the 2nd cutting station, where the other two sides were cut. The weight of the CRT was enough to secure it for the cutting and transfer. A cushioned bumper may be added to support the CRT to enhance stability (was not used in the prototype system). The conveyor belt speed was set at 32 ipm. The system throughput



Conceptual schematic of the four-nozzle waterjet system.

was 2 CRTs per minute, much higher than the required 1 CRT per two minutes. Therefore the authors concluded that the experiment was successful.

* Geskin, E.S., Goldenberg, B., & Caudill, R. (2002) Development of advanced CRT disassembly technology, In Paul Lake (Ed.), *Proceedings of the 16th International Conference on Water Jetting, Aix-en-Provence, France, October 16-18, p583-593.*

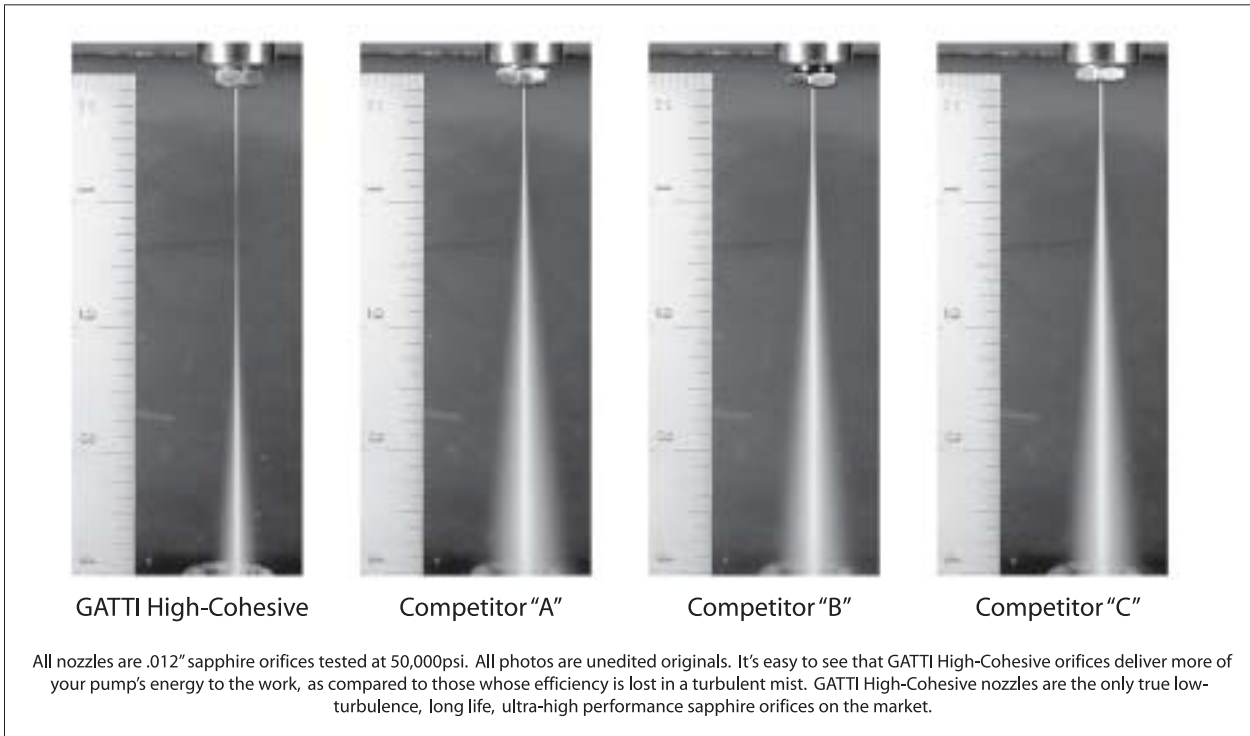
Article reprinted with permission from the *Quality Waterjet Newsletter*, August 1, 2006, published by QualJet LLC, www.qualjet.com



The original is still the best.

- ☒ Aerospace quality heat-treated housing (certifications on file)
- ☒ 100% pressure testing in-house at 50,000 psi for stream coherency
- ☒ Highly polished sapphire orifices using a proprietary GATTI developed process for long life and performance
- ☒ Patented internal design delivers an ultra-coherent waterjet stream to minimize energy loss

It's *clear* to see how High-Cohesive orifices stand up to the competition...



You've made a considerable investment in your equipment.
 Shouldn't you be getting the most out of it?



For over 25 years A.M. GATTI has been designing and manufacturing high quality precision waterjet orifice assemblies and related components for the world market. As industry leaders in orifice assembly and carrier head design, our products are recognized worldwide for their quality, exceptional performance, and inherent safety by design.



Waterjetting Effects On Concrete Moisture Level

Waterjetting effects on the moisture level in concrete has been a subject of controversy in the cleaning and surface preparation industry. Last year Todd A. Shawver conducted a series of tests and published a paper* to provide a scientific answer that clears up the previous speculation. Here are the main points of his paper.

The effectiveness of water jetting for surface preparation has been proven. Its percentage of surface interference failure is only 7%, compared to 38% for abrasive blasting, and 31% for jack-hammering. Waterjetting is capable of

removing invisible contaminants, one of the main causes of coatings failures. It also eliminates dust and does not disrupt other nearby work. Among current practices for concrete coating removal, one of the most common methods is shot blasting with recyclable steel shots. Some of these steel shots can escape the vacuum system and become a potential source of coating failures. Failure to completely remove invisible contaminants and creating dust are also the disadvantages of shot blasting.

However, with waterjetting, there has been a concern that it may

(continued on page 11)



Semi-automated tools are the most popular for performing coating removal from concrete.

WWW.IWPWATERJET.COM

Better Parts - Better Pricing

VISIT OUR WEB SITE WITH OVER 400 PRODUCTS, INSTALLATION PROCEDURES, EXPLODED VIEWS AND SERVICES

- PARTS FOR ALL MAKES OF MACHINES
- SAME DAY SERVICE
- UNSURPASSED QUALITY
- VALUE PRICING
- SATISFACTION GUARANTEE

ADDITIONAL 5% DISCOUNT ON PARTS ORDERS FROM OUR WEB SITE

INTERNATIONAL WATERJET PARTS INC.
A Division of IWG
1299 A STREET SE
EPHRATA WASHINGTON 98823



Phone: 509-754-3284
Toll Free: 866-302-3284
Fax: 509-754-3292
Toll Free: 866-883-3292
Email: iwp@iwpwaterjet.com

Additional 5% discount on parts orders from our web site.

We offer Ceratizit brand nozzles to fit most cutting heads.

Don't settle for less when you can have the best!!!!



**WANT TO CUT YOUR GARNET USAGE UP TO 30%?
CALL US TO ASK US HOW.**

Jet Edge Appoints New International Sales Engineer



Antoine Deproost

Jet Edge, Inc. has appointed Antoine Deproost as its new International Sales Engineer.

Antoine is responsible for sales of Jet Edge systems in Europe, South America and the Middle East, and for developing international distribution partners in Africa, Asia, Australia, the Caribbean and Central America.

Antoine brings to Jet Edge more than 20 years of experience in international sales and global product management. Previously, he held sales and product management positions with Omega Engineering, a manufacturer of measurement control instruments; Thermo-Electron, a manufacturer of measurement and control instrumentation; and Endress-Hausser, a global supplier of measurement controls. Antoine has an Electro-Mechanics engineering degree from T.I.K.B of Belgium and a specialization diploma in electronics from PBNA, a Dutch engineering academy. He also has received training in marketing and sales. Antoine is a native of Brussels, Belgium.

2007 American WJTA Conference and Expo

August 18-22, 2007

Marriott Houston Westchase
2900 Briarpark Drive, Houston, Texas 77042

- **Live, Onsite Demonstrations** of a variety of waterjet applications, including cleaning, paint/coating removal, concrete preparation, and testing the durability of safety equipment.
- **Waterjet Expo** featuring companies exhibiting the latest waterjetting equipment, systems and supplies.
- **Waterjet Boot Camp** — Industry experts offer information and suggestions on ways to help contractors buy smart, improve efficiency and generate profitable new business. Sessions are presented in the exhibit hall so participants can alternate between viewing exhibits and catching sessions of interest.
- **Waterjet Technology: Basics and Beyond Pre-Conference Workshop** — Start with the basics and follow up with an in depth look at waterjet applications: Surface Preparation, Cleaning Applications, and Cutting Applications.
- **Emerging Technology, New Applications** — Hear some of the world's foremost engineers and researchers share new developments in applications, mechanics, equipment, and procedures.

The **WJTA Conference and Expo** is unique in that the program is dedicated to high pressure waterjet technology and related industries. If you are involved in high pressure waterjetting for cleaning, surface preparation, industrial vacuuming/air moving for industrial cleanup/recovery, waterblasting or cutting, or if you are interested in finding out more about the industry, the **WJTA Conference and Expo** is an ideal resource for information and an excellent meeting for networking with other professionals in the field.

Hotel Reservations at the Marriott Houston Westchase

The Marriott Houston Westchase is the central location for the WJTA Conference and Expo activities. To make reservations, call toll-free **1-800-452-5110** or contact the Marriott directly at **1-713-978-7400**. Be sure to identify yourself as attending the WaterJet Technology Association Conference to receive the special group rates of **\$109 single/\$119 double occupancy**. **August 10, 2007**, is the deadline for guaranteed room availability. Reservations received after August 10, 2007, will be confirmed on a space available basis. Rooms may still be available after August 10, but not necessarily at the rates listed above.



Visit WJTA's website, www.wjta.org, for regularly updated Conference information

Acquisition Launches New Life Sciences Automation Product Line For PaR Systems

PaR Systems Purchases SSI Robotics

PaR Systems Inc. has announced the acquisition of SSI robotics, a provider of laboratory automation products and life science equipment development and manufacturing services, based in Tustin, CA.

PaR Systems provides automation and material-handling solutions to a variety of industries including aerospace, military, government laboratories, medical, and manufacturing. SSI Robotics will become the core of PaR Systems' new Life Sciences Automation product line focusing on biotechnology, laboratory, medical and pharmaceutical applications. The acquisition gives PaR Systems access to the life-science market and supplies SSI Robotics with expanded automation and robotics expertise to offer these customers. Paul Smith, founder of SSI Robotics, was named the general manager for the new business.

"SSI Robotics specializes in laboratory automation, a specialized market requiring the ability to integrate multiple instruments and intricate automation systems," said Brian Behm, president of PaR Systems, Robotics. "SSI Robotics has an excellent reputation with top biotechnology, medical device, and pharmaceutical firms that we intend to build on."

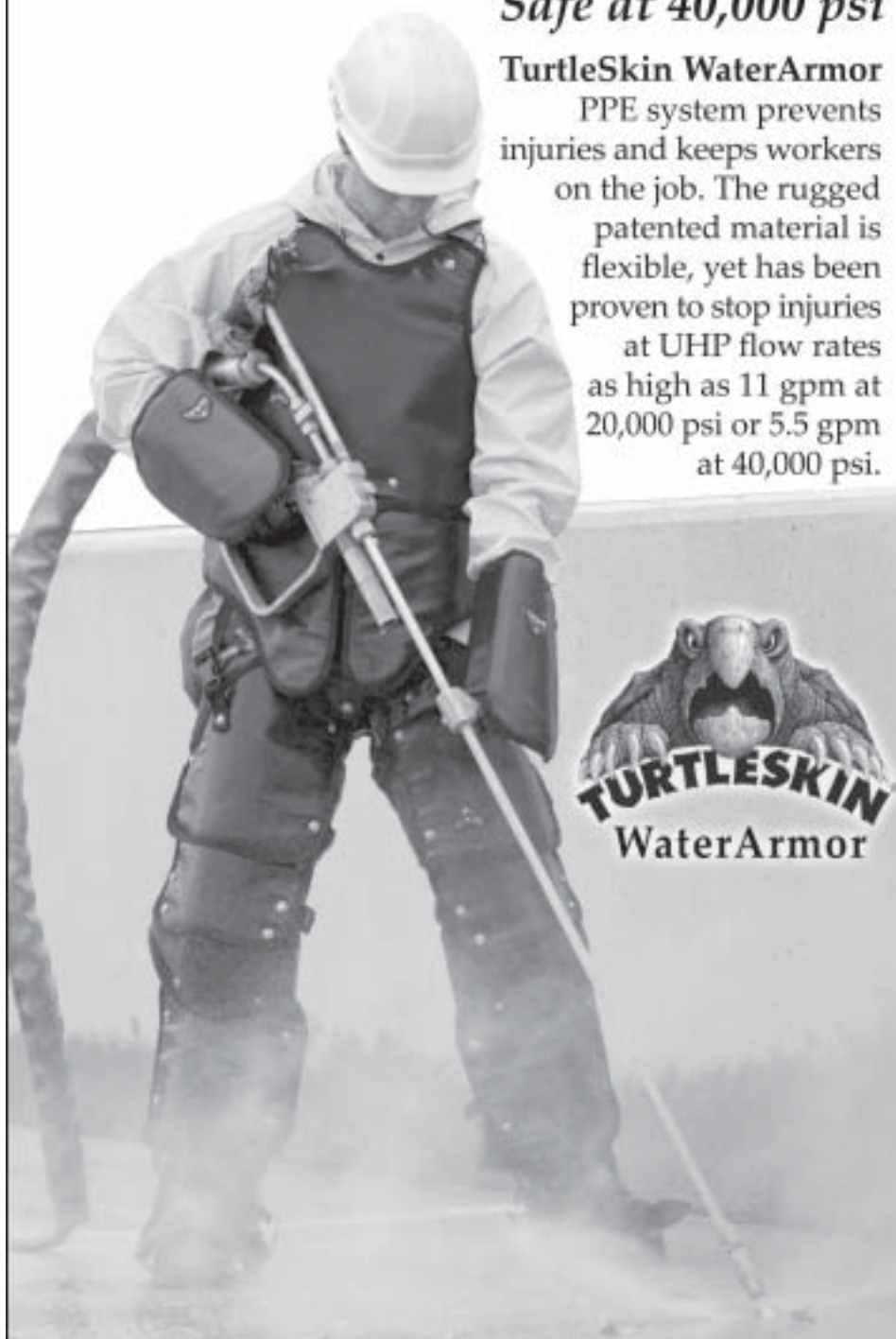
PaR Systems purchased SSI Robotics from their bankruptcy sale process. PaR Systems will retain the SSI Robotics facility in California.

For more information, visit www.ssirobotics.com.

UHP WaterJet Protection

Safe at 40,000 psi

TurtleSkin WaterArmor
PPE system prevents injuries and keeps workers on the job. The rugged patented material is flexible, yet has been proven to stop injuries at UHP flow rates as high as 11 gpm at 20,000 psi or 5.5 gpm at 40,000 psi.



Proven Safe In The Field

1.603.878.1565

turtleskin.com

Abrasive Waterjets For Surface Finishing Of Marble

Abrasive waterjets are most common in cutting applications. Bortolussi et al.* presented a paper on their experimental study on using Abrasive waterjets for surface finishing of marble. Here are the highlights.

As the last stage of stone processing, surface finishing has to meet aesthetic and durability requirements. Smoothing and polishing is the most common surface finishing method of stone elements used for interior decoration. However a smooth stone surface may present a slippery condition that becomes a safety concern. To address this safety issue, currently several processes are available for roughing up the surface, including bushhammering, sand blasting, flaming, shot peening, milling, laser beam engraving, and waterjetting. Each of these methods has its advantages and limitations. When aesthetic values and safety are equally important, abrasive waterjets may present an opportunity to meet the requirements.

An experimental parametric study was done to determine the effects of abrasive waterjets process parameters on the stone surface. A well known marble material, "Bianco Carrara", was used in the tests. 300 tests were done by changing one of the 7 factors at a time. These 7 factors are: Pressure (100 and 330 MPa), Orifice Diameter (0.25 and 0.50 mm), Focusing Tube Diameter/Length (3/27.3 and 1.4/27 mm), Abrasive Flow Rate (55.4 & 158.7 g/min for coarse garnet and 78.5 & 183.2 for fine garnet), Traverse Speed (1000, 6000, & 10000 mm/min), Stand-off Distance (50, 100, 150 mm), and Average Garnet Particle Size (0.4775 – coarse & 0.2835 – fine).

The effects on the marble surface were indicated with the width of erosive bands, depth of kerf, and image analysis (scale of "Grey"). Based on these data, regression equations (refer to the original paper for these equations) were developed to relate "Outer Band Width", "Inner

Band Width", "Depth of Kerf", and "Density of Impacts" to the 7 factors.

The width of erosive bands is most significantly related to Stand-off Distance. Particle size has no impact.

(continued on page 10)

Pumps, accessories and answers.
All at www.nlbcorp.com.

Experienced contractors can tell you: the first name in water jet solutions is NLB.

From immediate equipment needs to simple questions, help is only a click away. NLB is the source for:

- top-quality pumps and accessories (to 40,000 psi) for virtually any job
- 1-man pump conversions
- convenient rentals, parts and service
- industry-leading R&D
- on-line water jet tips and forums

For a 24/7 link to the most productive water jet solutions, visit www.nlbcorp.com. Or speak with one of the NLB pros, toll-free, at 1-877-NLB-7988.

NLB. The Contractor's Choice.



29830 Beck Road, Wixom, MI 48393
MI: (248) 624-5555, TX: (281) 471-7761
NJ: (856) 423-2211, LA: (225) 622-1666
CA: (562) 490-3277
e-mail: nlbmktg@nlbusa.com

Wear-Ring Now Included On Every StoneAge Badger

StoneAge's engineers have come up with a simple design that will extend the life of both the Badger 15k and Badger 20k psi tools. They have added a heat-treated 4130 steel wear-ring that will be included with all new Badger tools being assembled. The wear-ring can also be easily installed on any existing Badger. Look for these on your next Badger purchase and if you would like any wear-rings for your existing tools just let StoneAge know.

The StoneAge SM-Air is getting a gearbox upgrade. The SM-Air is most

commonly used in boilers, tanks, and other confined spaces where the demands on waterblasting equipment are the toughest. Contractors use as much as 300 gpm with 10,000 psi to penetrate the thick deposits. To meet these demands, StoneAge now uses a more durable Boston Gearbox. The new gearboxes are in stock and all future SM-Air units will come standard with this upgrade.

For more information, visit www.stoneagetools.com, call (970) 259-2869, or email: sales@stoneagetools.com.

IMPORTANT NOTICE REGARDING SPAM

Email addresses and other member contact information published in the WJTA Membership Directory is meant to encourage helpful, informative communication between members. The information is not provided to circulate spam or junk mail.

The WJTA leadership requests that members respect the contact information of fellow members and not use that information for the dissemination of spam or junk email. Membership information is not meant to be circulated beyond the WJTA membership.

Abrasive Waterjets For Surface Finishing Of Marble, from page 9

Other process parameters have some small effects. Depth of kerf is strongly related to Pressure and Stand-off Distance. Other parameters show secondary effects. Density of Impact is strongly related to all parameters except for Particle Size. Diameter of Focusing Tube has the highest impact. In fact it is the ratio of Focusing Tube vs Orifice that matters the most.

The authors concluded that it is possible to use abrasive waterjets for surface treatment, carving, and drawing, and as a substitute to sand blasting.

* Bortolussi, A., Manca, M.G., Careddu, N., Ciccu, R., & Olla, S. (2002) Surface finishing of marble with abrasive waterjet, in Proceedings of the 16th International Conference on Water Jetting, Aix-en-Provence, France, October 16-18, p.425-435.

Article reprinted with permission from the *Quality Waterjet Newsletter*, July 18, 2006, published by QualJet LLC, www.qualjet.com

Your Accessories Specialists

Visit www.stoneagetools.com for



Surface Prep
15k, 20k, 40k psi



All Sizes
of Pipes



- **Complete Product Catalog**

Download the latest info on all of our tools

- **Information Center**

Industry Leading Research Papers

- **Access Literature**

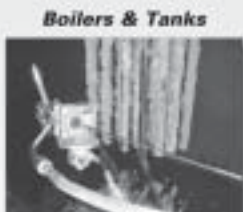
Catalogs, Flyers, & Newsletters

- **Specialty Products**

Unique Solutions for Difficult Applications



Exchangers and
Tube Lancing



Boilers & Tanks



Rotary Couplings
2k - 40k psi

While at our site
check out the
new Banshee tube
cleaner!

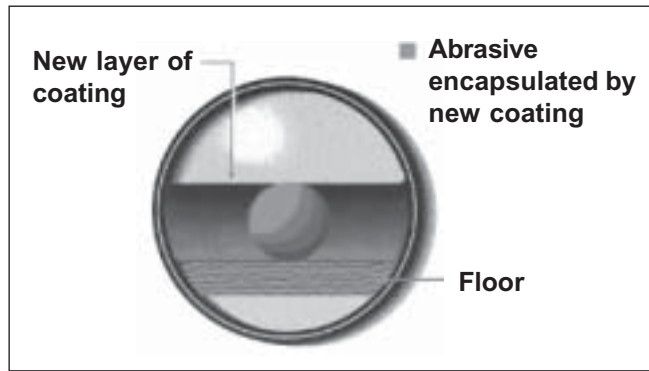


STONEAGE[®]
WATERJET TOOLS

Waterjetting Effects on Concrete Moisture Level, from page 6

increase the moisture level in the concrete and thus cause blistering, delaminating and other forms of coating failures. To provide a scientific answer to this question, a series of tests were done under controlled conditions. The tests were done on smooth and clean concrete surfaces. The target environmental condition

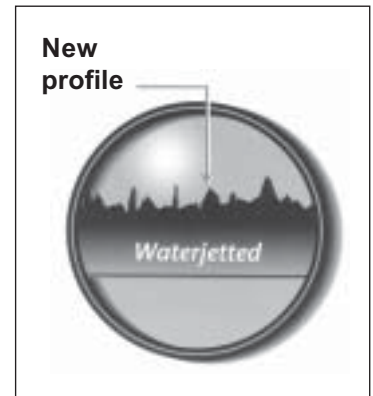
was a sunny day with 75°F and 50% relative humidity. The actual condition was 77°F and 55% relative humidity as well as a light to variable wind at 3 miles per hour. The moisture level of the concrete surface was measured with a specialized tool, which measures the electric impedance of the concrete. The subject concrete surface was divided into 4 different zones. Zone 1 was base concrete, used as a reference. Its moisture was measured and the value was 3.4% throughout the test duration. Zone 2 was prepared with a “SpinJet” at 40 kpsi and 6 gpm within a time frame of 7 seconds. A vacuum recovery system was employed to remove the waste water. The moisture level was increased from 3.4% to 4.5% immediately after cleaning, but then dropped to 2.9% after just 2 minutes. The reason why afterwards moisture value was lower (2.9% compared to 3.4%) was because the reading prior to cleaning was affected by some “Iron” deposits. The same test was repeated on the cleaned surface and the result confirmed this (same 2.9% prior to and 2 minutes after cleaning). Zone 3 was similar to Zone 2 but without vacuum recovery. The moisture level dropped back down to 3.3% after 25 minutes. Zone 4 was



The abrasive material that remains on the floor compromises the new coating.

soaked with running water for a 3-hour period to simulate saturation from precipitation. The moisture level returned to 3.4% after 35 minutes. The table below shows the moisture variation in the tested period.

The conclusion was that waterjetting at 6 gpm and 40 kpsi with a vacuum recovery system does not cause any measurable increase in moisture level of concrete surfaces.



Water jetting exposes the aggregate in the concrete, proving an excellent bonding surface for the new coating system.

* Shawyer, Todd. A. (2005) The effects of UHP surface preparation on concrete moisture levels using UHP water jets, in Mohamed Hashish (Ed.), Proceedings of the 2005 WJTA American Waterjet Conference, Houston, Texas, USA, August 21-23, Paper 5B-4.

Article reprinted with permission from the Quality Waterjet Newsletter, August 29, 2006, published by QualJet LLC, www.qualjet.com

| Time In Minutes | ZONE #1 Base Concrete (% Moisture) | ZONE #2 SpinJet With Vacuum Recovery (% Moisture) | ZONE #3 SpinJet Without Vacuum Recovery (% Moisture) | ZONE #4 Water Saturation (% Moisture) | ZONE #2 RETEST SpinJet With Vacuum Recovery (% Moisture) |
|-----------------|------------------------------------|---|--|---------------------------------------|--|
| 0 | 3.4 | 3.4 | 3.4 | 3.4 | 2.9 |
| 0.5 | 3.4 | 3.5 | 6.1 | 6.1 | 3.4 |
| 1 | 3.4 | 3.3 | 6.1 | 6.1 | 3.1 |
| 2 | 3.4 | 2.9 | 6.1 | 6.1 | 2.9 |
| 3 | 3.4 | 2.9 | 6.1 | 6.1 | 2.9 |
| 4 | 3.4 | 2.9 | 6.1 | 6.1 | 2.9 |
| 5 | 3.4 | 2.9 | 6.1 | 6.1 | 2.9 |
| 6 | 3.4 | 2.9 | 6.1 | 6.1 | 2.9 |
| 7 | 3.4 | 2.9 | 6.1 | 6.1 | 2.9 |
| 8 | 3.4 | 2.9 | 6.1 | 6.1 | 2.9 |
| 9 | 3.4 | 2.9 | 6.1 | 6.1 | 2.9 |
| 10 | 3.4 | 2.9 | 6.1 | 6.1 | 2.9 |
| 15 | 3.4 | 2.9 | 6.1 | 6.1 | 2.9 |
| 20 | 3.4 | 2.9 | 5.9 | 6.0 | 2.9 |
| 25 | 3.4 | 2.9 | 3.3 | 4.2 | 2.9 |
| 30 | 3.4 | 2.9 | 3.3 | 3.7 | 2.9 |
| 35 | 3.4 | 2.9 | 3.3 | 3.4 | 2.9 |

Jet Edge Exhibiting At Fabtech, EuroBLECH 2006

Jet Edge, Inc. will demonstrate its latest waterjet cutting technologies at the FABTECH International and AWS Welding Show, Oct. 31-Nov. 2, at the Georgia World Congress Center in Atlanta, GA.

During FABTECH, Jet Edge sales engineers will conduct live abrasive waterjet cutting demonstrations on Jet Edge's High Rail Gantry System utilizing the new high-powered iP60-50 intensifier pump, AquaVision Di[®] motion controller, and Digital Readout for Multi Head Positioning. The Georgia World Congress Center is located at 285 Andrew Young

International Blvd. N.W. Look for Jet Edge in booth #8110. FABTECH hours are 9 a.m.-5 p.m. Oct. 31, 9 a.m.-6 p.m. Nov. 1, and 9 a.m.-4 p.m. Nov. 2.

Jet Edge's waterjet cutting systems cut nearly any material, from food products to hardened tool steel to titanium. The company's systems are being used by airlines, automotive and aerospace manufacturers as well as industrial manufacturing companies and machine and job shops around the world. Jet Edge's customers include Ford, Toyota, General Motors, Boeing, American Airlines, and General Electric.

"Our cutting systems have many advantages," said David Dumas, Jet Edge director of sales. "We are known for our very large work areas and accuracy. We can hold an accuracy of 0.005 inch with a repeatability of 0.001 inch over the entire work envelope. Our cutting systems are powered by hydraulic intensifier pumps that can offer 15,000 to 30,000-plus hours of operation on the hydraulic pump, depending on the model. This, of course, means greater productivity and lower operating costs.

(continued on page 13)

...your operation by attending the trade show with everything you need to boost productivity and achieve maximum performance.

Nothing compares to seeing technology in action. With nearly 2,000 pieces of equipment powered up on the show floor, the FABTECH International & AWS Welding Show provides the ultimate "hands-on" experience. It's the best place to evaluate new products, problem-solve, network with peers, and upgrade job skills.

- 600+ exhibits
- Thousands of equipment experts
- Over 100 technical presentations

Get ready to energize yourself and learn how to stay ahead of the competition!

Register now at www.sme.org/fabtech or call (800) 733-4763.

FABTECH INTERNATIONAL & AWS WELDING SHOW

SPONSORED BY

North America's Largest Metal Forming, Fabricating & Welding Event
October 31 - November 2, 2006 • Georgia World Congress Center • Atlanta, GA USA

Jet Edge Exhibiting At Fabtech, EuroBLECH 2006, from page 12

The cutting systems are controlled by a state-of-the-art AquaVision Di[®] motion controller that guides users through the project step-by-step.”

During FABTECH, show participants can see for themselves the remarkable versatility and speed of Jet Edge’s High Rail Gantry System. They also can see Jet Edge’s iP60-50 intensifier pump in action. The “heart and soul” of the Jet Edge waterjet cutting system, the iP60-50 intensifier pump is rated for 60,000 psi and features an extended-life hydraulic system. The iP60-50 intensifier pump provides easy access for all service and maintenance. It features non-threaded high-pressure components in the high-pressure cylinder, an improved performance check valve, and low torque values. The Jet Edge iP60-50 intensifier pump leads the industry with ease of operation and low operating cost. It requires very few tools to maintain.

The cutting system is controlled by the AquaVision Di[®] motion controller that guides users through the process from job set-up to production. With the AquaVision Di[®], single parts, part arrays, mirroring, scaling, rotation, and plate alignment are right at users’ fingertips. The AquaVision Di[®] is fully networkable, allowing part programs to be generated offline and easily transferred to the system’s hard drive for production. Feed rate and acceleration are automatically varied, based on known features of a specific job. Dynamic tool offset, or “cutter compensation,” is employed real-time, and an optional real-time pump control allows remote starting and stopping of the pump, dual pressure set points for piercing hard-to-pierce materials, and unlimited data logging of every process parameter imaginable.

The AquaVision Di[®] includes a full-featured hand-held pendant that allows feed rate override, return-to-path, program zero set points, and XYZ axis control.

Jet Edge’s Digital Readout for Multi Head Positioning, which improves productivity by reducing setup time, digitally displays cutting head positions, eliminating manual measurement.

Jet Edge, Inc. will also demonstrate its new iP60-50 ultra-high pressure waterjet intensifier pump at EuroBLECH 2006, Oct. 24-28, at the



Exhibition Grounds in Hanover, Germany. Look for Jet Edge in Hall 16, Booth D17.

For more information, visit www.jetedge.com, call 1-800-538-3343 or email: sales@jetedge.com.

Waterjet Products

BARTON

It's all here!



HPX "Hard Rock"
Abrasives



HPA "Alluvial"
Abrasives



TRIDENT
Diamond Cutting Head



ROCTEC[®] Nozzles
Mfr. by Kennametal



HYPERION
Abrasivejet Nozzles
Mfr. by Ceratizit



HydroBloc
Waterjet Bricks

Visit Us at FABTECH Booth 9115

For more information contact:
Barton Mines Company, LLC • 1557 State Route 9
Lake George, NY 12845
USA/Canada: 800-741-7756 • Fax: 518-798-5728 • www.barton.com

WJTA Welcomes New Members

Corporate

Industrial Cleaning & Degreasing, LP

*Chuck Self
Morris Gates
Ken Orlich*

3710 N. Highway 67
Midlothian, TX 76065
Phone: (972)723-1122
Fax: (972)723-1132

Power Services Company

*Jim D. Humphrey
Ben Duran*

P.O. Box 13
Greeley, CO 80632-0013
Phone: (970)356-4148
Fax: (970)356-4168

Super Products LLC

*Jim Petillo
Jim Wurster*

17000 West Cleveland Avenue
New Berlin, WI 53151
Phone: (262)784-7100
Fax: (262)784-9562

Vacuum Truck Rentals, LLC

*Payton L. Lockey
B.T. Steadman*

P.O. 180789
Richland, MS 39218
Phone: (601)933-4650
Fax: (601)933-4653

Phil Maichle

2760 Battleground Road
LaPorte, TX 77571
Phone: (281)476-4490
Fax: (281)476-4491

Individual

Babak Baharikia

Suite 1905
9717 111th Street
Edmonton, AB T5K 2M6
Canada
Phone: (780)455-9790

Individual (continued)

Melanie Delfakis

Precision Industrial Supply
LLC
P.O. Box 2834
Hayden, ID 83835
Phone: (208)762-3536
Fax: (208)762-7635

Eddie Goins

American Plant Services
1218 Sylacauga Fayetteville
Highway
Sylacauga, AL 35151
Phone: (205)837-5702
Fax: (256)245-7008

Kevin Goodnight

DSM NeoResins
3110 W. State Road 28
Frankfort, IN 46041
Phone: (765)654-2662
Fax: (765)659-4725

Anthony Lorenz

Honda R&D Americas Inc.
21001 State Route 739
Raymond, OH 43067
Phone: (937)309-4924
Fax: (937)645-8574

Eric Mohowitsch

Dow Corning
Building 2405
3901 S. Saginaw Road
Midland, MI 48640
Phone: (989)496-5837
Fax: (989)496-8917

Herbert Queiser

URACA Pumpenfabrik GmbH
& Co. KG
Sirchinger Str. 15
Bad Urach 72574
Germany
Phone: [49](7125)133-359
Fax: [49](7125)133-202

Dave Slawiak

Sunstate Waterblasting
1643 Glen Oak Lane
Lutz, FL 33549
Phone: (813)426-5104
Fax: (813)949-0065

Individual (continued)

Eric Sturm

Honeywell International Inc.
218 Arrowhead Lane
Eighty-Four, PA 15330
Phone: (724)942-0143
Fax: (724)942-0143

Scott Wilson

Vactor Manufacturing, Inc.
1621 South Illinois Street
Streator, IL 61364
Phone: (815)673-6040
Fax: (815)673-1621

Tony Woodall

AST Waterjet
1007 N. Wildwood
Irving, TX 75061
Phone: (800)532-0383
Fax: (972)579-7839

Corporate Alternate

Tommy Do

Hydro-Engineering, Inc.
14706 Park Alameda
Houston, TX 77047
Phone: (713)782-1932
Fax: (713)782-4202

Julie Tan

PaR Systems, Inc.
899 Highway 96 West
Shoreview, MN 55126
Phone: (651)484-7261
Fax: (651)483-2689

Corporate Individual

J.R. Dunkle

International Waterjet Parts
1229 'A' Street SE
Ephrata, WA 98823
Phone: (866)302-3284
Fax: (866)883-3292

WJTA Administration

Chairman of the Board

John Wolgamott
(970)259-2869

President/Jet News Editor

George A. Savanick, Ph.D.
(952)432-7594

Vice-President

Pat DeBusk
(281)842-8000

Treasurer

Larry Loper
(800)289-7447

Secretary

Craig Anderson
(281)925-4501

2005-2007 Directors

Lydia M. Frenzel, Ph.D.
(512)392-2210

Hugh B. Miller, Ph.D.
(520)621-4689

Mohamed Hashish, Ph.D.
(253)850-3500

Carl Olsen
(253)872-2300

Bill McClister
(713)307-2142

Forrest Shook
(248)624-5555

David Summers, Ph.D.
(573)341-4314

Emeritus Members

Andrew F. Conn, Ph.D.
(410)532-3452

Thomas J. Labus
(262)245-9702

Thomas J. Kim, Ph.D.
(401)874-5991

Fun-Den Wang, Ph.D.
(303)279-9415

Association Managers

Mark S. Birenbaum, Ph.D. • Kenneth C. Carroll
(314)241-1445



Aqua-Dyne Products Better. Faster. Safer.

We have the right waterjet cleaning equipment to get your job done.

Better. Faster. Safer.

We've been doing it that way for more than 35 years.

Lower cost and less maintenance.

Call us today. We'll show you how. 713.864.6929 www.aqua-dyne.com



KMT's Waterjet Cutting Head Updated For Ease Of Use

KMT Waterjet introduced the new Autoline II™ abrasive cutting head at the IMTS show in Chicago. The new cutting head maintains all of the same features which earned it the position as the number one performing head (in terms of overall efficiency and cutting performance), as tested against nine other heads by the University of Missouri-Rolla, however, has new features which make it even easier to use.

Shajan Chacko, one of the lead engineers behind the new cutting head, said that some of the key new features include a weep hole to indicate whether the orifice is seated correctly, a larger and relocated wear insert for quicker replacement, and a new abrasive inlet for easier connection of the abrasive feed line.

The new cutting head is designed for rapid changes of the orifice, without tools, making it very easy to

use larger orifice sizes with narrower focusing tubes for emphasis on faster cutting rather than efficiency. The ideal ratio between focusing tube and orifice is 3:1, however, using a 2.2:1 or 2:1 ratio will allow faster cutting at the expense of shorter focusing tube life. For example, overall it is more efficient to use a .007" orifice with a 0.021" focusing tube. However, substituting a larger orifice allows more water and more energy into the

head for faster cutting. The AUTOLINE II™ makes it possible to change the orifice very quickly.

All of the features were added while still protecting the efficient cutting performance and reliability. The AUTOLINE II™ efficiently uses abrasive to maximize cut speeds.

For more information, visit www.kmtwaterjet.com or call (620) 856-6239.

SPIR STAR Relocates To New Facility

SPIR STAR, manufacturer of Thermoplastic High Pressure Hose, has announced a move to its new assembly facility located at 10002 Sam Houston Center Dr., Houston, TX 77064. The new telephone number is (281) 664-7800 and the new fax number is (281) 664-7850. This move accommodates growth and expands SPIR STAR's capabilities.

Flow Introduces Latest Waterjet Cutting Technology at IMTS 2006

Flow International Corporation (NASDAQ: FLOW) introduced its latest waterjet cutting advancements at IMTS 2006 in Chicago, IL.

IFB with 87,000 psi with HyperPressure Technology

Flow's latest IFB waterjet machine incorporates 87,000 psi waterjet cutting. Flow's HyperPressure technology enables faster, more cost-effective cutting. Waterjet cutting at 87,000 psi provides a host of benefits to manufacturers including:

- Faster cutting, lower part cost and higher production, including cutting speeds that are 20-30% faster than 60,000 psi

- 20-30% lower part cost than 60,000 psi
- Increased power density and jet efficiency
- 40% higher velocity
- Lower abrasive consumption, with 30-50% less abrasive used than 60,000 psi
- Reduced part taper
- Simpler, faster maintenance

MicroJet Waterjet Cutting System

Flow's new MicroJet waterjet machine is a highly accurate, small envelope waterjet system capable of cutting highly intricate and accurate

parts. Benefits of Flow's MicroJet system include the ability to:

- Perform precision machining
- Complement EDM operations with higher speed waterjet cutting capability
- Cut and drill holes with same machine
- Cut fine parts used in medical and other industries requiring highly precise parts
- Cut with exceptional detail, with a kerf width of 0.015 inch (380 micrometer)" and radius of 0.0075 inch (140 micrometer)"

For more information, visit www.flowcorp.com.

WANT AN ALTERNATIVE SOURCE FOR YOUR WATERJET SYSTEM?

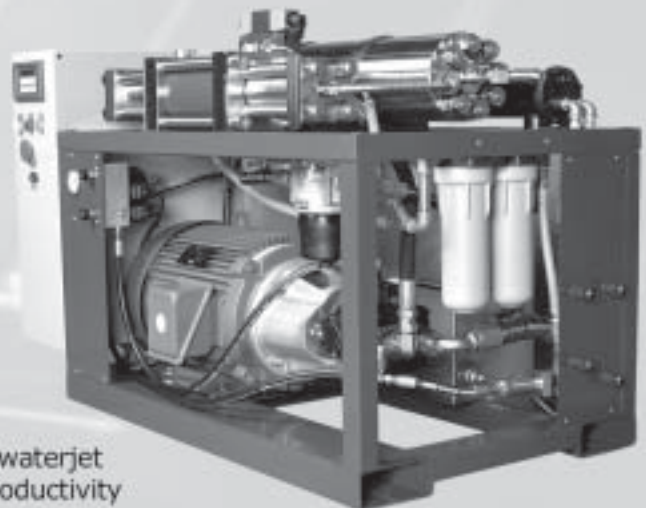
Ask AccuStream How

Our new **low cost** waterjet cutting package provides everything you need, including:

- Total system Integration
- Best Warranty in the Industry
- Training and service support
- Waterjet engineering assistance



Ask the Experts at AccuStream how our waterjet integration package can improve your productivity and keep you ahead of the competition.



Ask AccuStream How
Toll Free 866.566.7099



Integration
Tech Support
Replacement Parts
Equipment

BIC Magazine Now Online

For more than two decades, the Business and Industry Connection (BIC) has provided readers with valuable information about the oil and gas, refining, petrochemical, power, and pulp and paper industries. Recently, the BIC Alliance, publishers of BIC, announced that the publication can be read online in its entirety.

At bicmagazine.com, visitors will find the same great feature articles as found in the print edition plus some other Web-only features. Take a peek at the animated online magazine by clicking on the image of the BIC magazine cover. (Be sure to allow "pop-ups.") Users will find an interactive version of the magazine that allows them to click for more information on a given topic.

Read BIC from cover to cover by clicking "NEXT," search the entire magazine and print specific pages or

pictures, all in this animated version. Visitors can even enlarge the pages for easier reading.

For a limited time, readers will have the chance to win a \$500 cash prize and one of three weekend getaways. To enter, forward a link to www.bicmagazine.com to 10 people and ccjong@bicalliance.com.

Prizes include:

1. A fishing trip for two with Big Lake Guide Services on Lake Calcasieu in Southwest Louisiana.
2. A two-night stay at Moody Gardens on Galveston Island, Texas.
3. A two-night stay at the Royal Sonesta in New Orleans' French Quarter.

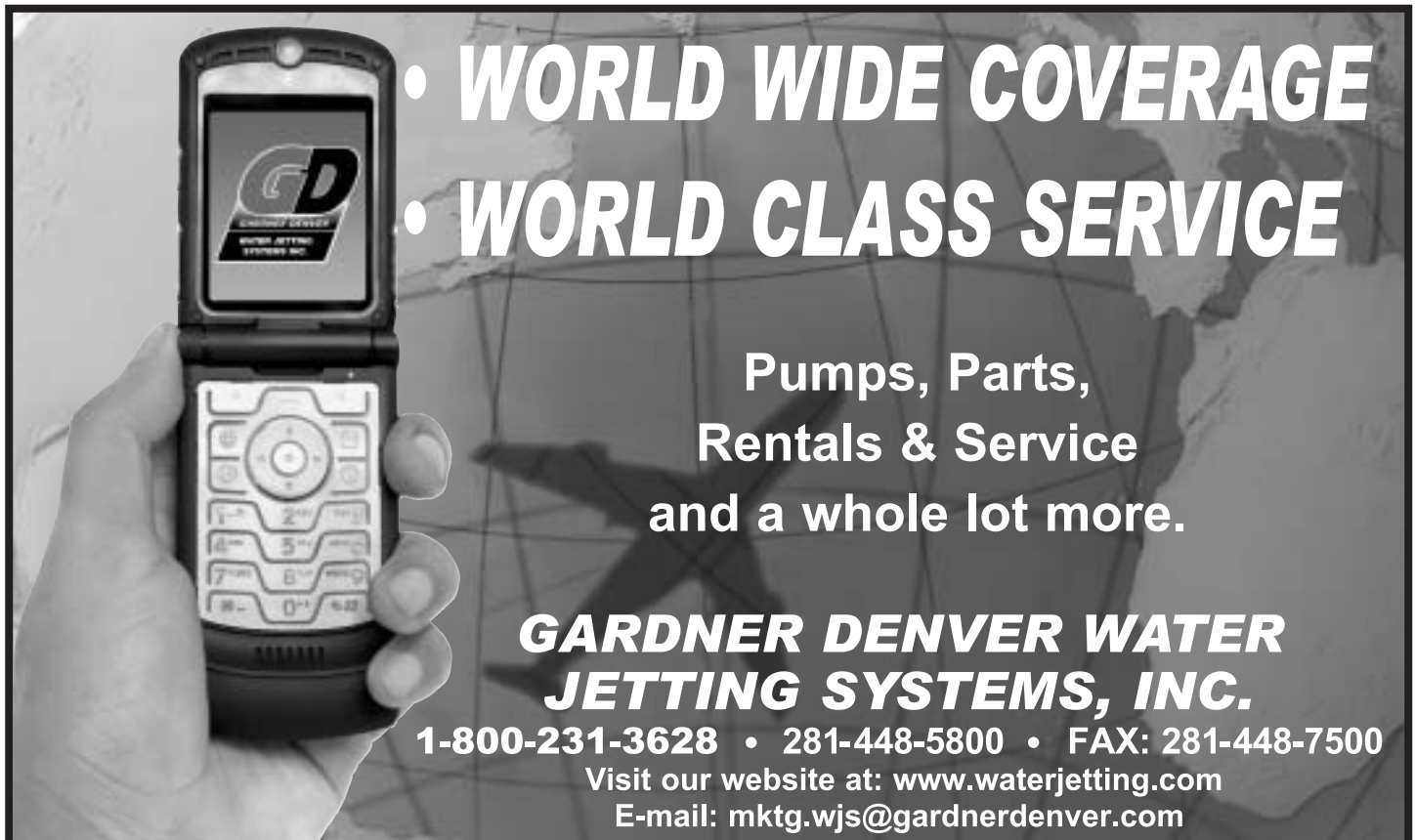
For more information visit www.bicmagazine.com or call Earl

Heard or Jon Guillaume at (800) 460-4242 or Terry Grover in Houston at (281) 486-1500. E-mail: tgrover@bicalliance.com.

Safety Committee Solicits Comments On Improvements To Recommended Practices

The WJTA Safety Committee hereby solicits comments regarding improvements to the publication, *Recommended Practices for the Use of Manually Operated High Pressure Waterjetting Equipment*. While *Recommended Practices* is reviewed periodically at the biennial conferences of the WaterJet Technology Association, your comments and suggestions for improving the publication are invited and welcome anytime.

Please address your comments and suggestions to: Safety Committee, c/o WJTA, 906 Olive Street, Suite 1200, St. Louis, MO 63101-1434, phone: (314)241-1445, fax: (314)241-1449, email: wjta@wjta.org, web site: www.wjta.org.



• WORLD WIDE COVERAGE
• WORLD CLASS SERVICE

**Pumps, Parts,
Rentals & Service
and a whole lot more.**

**GARDNER DENVER WATER
JETTING SYSTEMS, INC.**

1-800-231-3628 • 281-448-5800 • FAX: 281-448-7500
Visit our website at: www.waterjetting.com
E-mail: mktg.wjs@gardnerdenver.com

Jet Edge Introduces New Waterjet Intensifier Pump Check Tube

Jet Edge, Inc. has introduced a new check tube design for its ultra-high pressure waterjet intensifier pumps. The new check tube has double the life of previous models and is easier to service, resulting in lower operating cost.

Jet Edge intensifier pump check tubes feature a low-pressure poppet and high-pressure poppet that open and close, allowing low-pressure water to flow into the high-pressure cylinder and ultra-high pressure water to leave the high-pressure cylinder. The new check tube design includes an improved low-pressure poppet, poppet housing and simplified check tube design. The design allows the low-pressure poppet assembly to be secured by a single hollow screw and does not require an adhesive such as Loctite®, eliminating the waiting



period for the adhesive to cure. This improved design has been incorporated into Jet Edge's new iP6050 intensifier pump. It also is available as a direct replacement part for all other Jet Edge Ultra-high Intensifier Pumps.

With the most comprehensive warranty in the industry, Jet Edge backs its high-pressure components,

check tubes, high-pressure cylinders and attenuators with a one-year unlimited hour warranty against defects and cracking. All Jet Edge high-pressure key components are tracked with serial numbers.

For more information, visit www.jetedge.com, call 1-800-JET-EDGE (1-800-538-3343) or e-mail sales@jetedge.com.

The *Jet News* is published by the WaterJet Technology Association (WJTA) and is a benefit of membership in the Association.

©2006 *Jet News*. All rights reserved. Reproduction in any form forbidden without express permission.

Your Source for Ultra High Pressure Hose

Servicing both the Waterblast & Coatings Removal Industries with Hose & Accessories



- Hoses for working pressures 10,000 to 50,000 psi
- NPT 15K rated fittings and adapters
- Complete range of medium and high pressure valves and fittings
- Blast Pro® Flexlances with Duralife™ outer cover
- Supply Hoses up to 1" ID

From the pump to the gun, we have the hose and fittings to get the job done.

SPIR STAR®

10002 Sam Houston Center Drive • Houston, TX 77064
281-664-7800 • 800-890-7827 • Fax: 281-664-7850
www.spirstar.com

One of the best, Diamond Cutting Head 'S5000'



The clear cutting edge and 1,000 hours* of usage is guaranteed, as long as it is properly used.

* We even have a customer that has used 2,000 hours.



S M T
www.smttool.com
admin@smttool.com

WaterJet Technology Association's Order Form for Publications/Products

Name _____ Member# _____
 Company _____
 Address _____
 City _____ State _____
 Country _____ Postal Code _____
 Phone # []() _____ Fax # []() _____
 Email _____
 (to receive shipping confirmation)

Billing Address (if different from above):
 Address _____
 City _____ State _____
 Country _____ Postal Code _____

Payment Method

Check or Money Order payable to **WJTA**
 (U.S. DOLLARS ONLY)

PO # _____ (Enclose PO)

Please charge my MC VISA
 American Express Discover

Credit Card # _____
 Exp. Date _____ / _____

 Print name as it appears on card

 Cardholder's signature

THREE EASY WAYS TO ORDER

By Phone: Just call (314)241-1445 and have your credit card information ready. (MC/VISA/Am. Exp./Discover ONLY).

By Fax: Fill out the order form with your credit card information and call our 24-hour fax number at: (314)241-1449.

By Mail: Fill out the order form and mail with applicable payment to: **WJTA, 906 Olive Street, Ste. 1200, St. Louis, MO 63101-1434.**

| | WJTA Member Price | Non Member Price | Shipping & Handling | = \$ |
|---|----------------------|---------------------|------------------------|------------|
| ____ Proceedings CD-ROM of The 2005 WJTA American Waterjet Conference (2005) | @ \$ 109.00 | \$ 129.00 | \$ 8.00 | = \$ _____ |
| ____ Proceedings CD-ROM of The 2003 WJTA American Waterjet Conference (2003) | @ \$ 35.00 | \$ 55.00 | \$ 8.00 | = \$ _____ |
| ____ Proceedings CD-ROM of The 2001 WJTA American Waterjet Conference (2001) | @ \$ 10.00 | \$ 30.00 | \$ 8.00 | = \$ _____ |
| ____ Proceedings Book & CD-ROM of The 10th American Waterjet Conference (1999) | @ \$ 10.00 | \$ 30.00 | \$ 8.00 | = \$ _____ |
| ____ Proceedings Of The 9th American Waterjet Conference (1997) | @ \$ 10.00 | \$ 25.00 | \$ 8.00 | = \$ _____ |
| ____ Proceedings Of The 8th American Waterjet Conference (1995) | @ \$ 0.00 | \$ 0.00 | \$ 8.00 | = \$ _____ |
| ____ Proceedings Of The 7th American Waterjet Conference (1993) | @ \$ 0.00 | \$ 0.00 | \$ 8.00 | = \$ _____ |
| ____ Waterjet Technology: Basics and Beyond 8/21/05 PowerPoint presentations in printed format | @ \$ 20.00 | \$ 25.00 | \$ 8.00 | = \$ _____ |
| ____ An Overview of Waterjet Fundamentals And Applications, Fifth Edition (2001) | @ \$ 55.00 | \$ 70.00 | \$ 8.00 | = \$ _____ |
| ____ An Overview of Waterjet Fundamentals And Applications 8/17/03 PowerPoint presentations in printed format | @ \$ 30.00 | \$ 35.00 | \$ 8.00 | = \$ _____ |

Minimum charge of \$8 per order. \$8 for 1-3 items purchased; \$16 for 4-7 items purchased; for 8 or more items purchased, contact the WJTA office.

Recommended Safety Practices, English Edition

| | | | | |
|--|---|-------------|--------------|------------|
| 1 - 10 copies _____ # of copies | x | \$ 5.00 ea. | \$ 10.00 ea. | = \$ _____ |
| 11 - 99 copies _____ # of copies | x | \$ 4.00 ea. | \$ 8.00 ea. | = \$ _____ |
| 100 - or more copies _____ # of copies | x | \$ 3.00 ea. | \$ 6.00 ea. | = \$ _____ |

Recommended Safety Practices, Spanish Edition

| | | | | |
|--|---|-------------|--------------|------------|
| 1 - 10 copies _____ # of copies | x | \$ 7.00 ea. | \$ 12.00 ea. | = \$ _____ |
| 11 - 99 copies _____ # of copies | x | \$ 6.00 ea. | \$ 10.00 ea. | = \$ _____ |
| 100 - or more copies _____ # of copies | x | \$ 5.00 ea. | \$ 8.00 ea. | = \$ _____ |

Shipping and Handling

1 - 10 copies \$0.50 per book, 11 - 99 copies \$0.40 per book, 100 - or more copies .. \$0.25 per book # of copies x \$ _____ = \$ _____

Recommended Safety Practices Video, Available In VHS Video or CD-ROM.

Specify: VHS Video or CDROM

| | | | | | |
|---------------------------------------|---|--------------|--------------|----------|------------|
| 1 - 4 copies _____ # of copies | x | \$ 49.95 ea. | \$ 99.95 ea. | \$ 6.00* | = \$ _____ |
| 5 - 10 copies _____ # of copies | x | \$ 39.95 ea. | \$ 89.95 ea. | | = \$ _____ |
| 11 - or more copies _____ # of copies | x | \$ 29.95 ea. | \$ 79.95 ea. | | = \$ _____ |

Shipping and Handling = \$ _____

*Contact the WJTA office for the shipping and handling charge of more than one Safety Video.

Baseball Cap _____ # of caps x \$ 7.95 each \$ 7.95 each \$ 6.00 ea. = \$ _____

WJTA Navy Blue Polo Shirt Size _____ (S, M, L, XL, 2X) _____ # of shirts x \$ 30.00 each \$ 35.00 each \$ 7.00 ea. = \$ _____

| | | | | | |
|---|------------------|---|----------|----------|------------|
| Safety Cards 1-10 safety cards | _____ # of cards | x | .30 each | .50 each | = \$ _____ |
| Specify: <input type="checkbox"/> English 11-99 safety cards | _____ # of cards | x | .25 each | .45 each | = \$ _____ |
| <input type="checkbox"/> Spanish 100-249 safety cards | _____ # of cards | x | .20 each | .40 each | = \$ _____ |
| 250+ safety cards | _____ # of cards | x | .17 each | .35 each | = \$ _____ |

Shipping and Handling

Safety Cards: 1-50 cards FREE (For the purchase of more than 50 safety cards, call the WJTA office for the shipping and handling charge.) = \$ _____

For shipping and handling charges outside the USA, contact the WJTA Office.

TOTAL ENCLOSED \$ _____

Performance Under Pressure

Count on our proven valves, fittings & tubing for your waterjet cutting & blasting system

Safely delivering water at elevated pressures for cutting and cleaning applications demands reliable operation from your valves, fittings and tubing. It demands Performance Under Pressure. For over 50 years, HiP has been focused on producing a complete line of the highest quality valves specifically designed for just such waterjet applications.

We're committed to providing our customers with the consistent quality and responsive service that helped us earn ISO9001 certification. We stock an extensive inventory of valves and accessories, allowing us to offer same day shipping of many products. For special orders, including custom manifolds, we have short lead times and experienced engineering assistance.

Before you spec high pressure valves, fittings or tubing, check out the company that Performs Under Pressure... HiP.

HiP...Our Name is High Pressure

*To find out more, come see us online at
www.highpressure.com
or call 1-800-289-7447*

ISO 9001
CERTIFIED

**High Pressure
Equipment
Company**

